

Heart Pine—Character Select



Pioneer millworks
RECLAIMED & SUSTAINABLE WOOD PRODUCTS



Coming straight from the heart of Longleaf Southern Yellow Pine timbers used in industrial construction, this reclaimed wood is a classic. Its high resin content means it's hard and durable and gives Heart Pine its characteristic deep amber grain. Our Character Select grade offers lively grain variation, knots, nail holes, swirling colors—durability, character, and history in one.



Pioneer Millworks

Heart Pine—Character Select

2/2018

CUT AND PASTE SPECIFICATION INTO APPROPRIATE CSI DIVISION

09 64 29—Wood strip and plank flooring
06 42 00—Wood Paneling

MANUFACTURER

Pioneer Millworks
1180 Commercial Drive
Farmington, NY 14425
Phone: 800-951-9663

Pioneer Millworks
2609 SE 6th Avenue
Portland, OR 97202
Phone: 503-719-4800

MATERIALS

- Product Name:** Character Select Heart Pine
- Species/Description:** Domestic Heart Pine, smooth planed
- Source:** Agricultural/Industrial deconstruction
- Color:** Tones may range widely from yellow to amber.
Unlimited color variation is inherent to the product.
- Grade:** Character Select
- Dimensions:**
 - Solid**
TH—3/4"
WD—3" to 10" as specified
LG—18" to 144" random
 - Engineered**
TH—N.A
WD—N.A
LG—N.A.
- Milling:** Tongue and Groove Square Edge (TGSQE)
- Finish:** Unfinished unless specified otherwise
- Hardness:** 1200
(Janka Ball Test ASTM D1037-96A, Natural wood products have no minimum hardness since hardness is a characteristic of species and cannot be controlled)
- FSC Claim:** (SCS-COC-003998)
 - Solid: Recycled 100%
 - Engineered: N.A.

ADDITIONAL INFORMATION

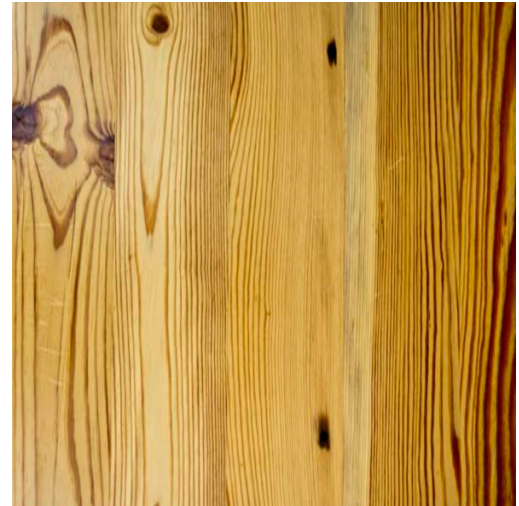
- Heartwood:** 70% or greater heartwood content.
- Grain:** No restriction
- Knots:** No limitations on sound knots, surface defects from chipped or open knots may be present. Knots should not exceed 2" in diameter
- Texture:** Surface should be 95% clear of saw marks or patina.
- Voids:** Nail, bolt and other mechanical holes can be present and occasionally reach 3/8" in diameter. Up to 20% of boards can be naily. Bolt holes are often left open in longer planks.
- Discoloration:** Ferrous staining from previous fasteners may be present.
- Checks:** Structural checks not affecting the integrity of the plank, once installed, are allowed and more prevalent as the width of the material increases.
- Moisture Content:** Kiln dried 6–9% prior to milling.

LEED INFORMATION

- MRC3: Materials Reuse
(materials used for this credit cannot be applied to MRC4 or MRC5)
- MRC4: Recycled Content, 100% Post-Consumer Recycled Content
(materials used for this credit cannot be applied to MRC3 or MRC7)
- MRC5: Regional Materials (call for details)
- MRC7: Solid Materials are FSC Recycled 100%

RECOMMENDED OVERAGE

Recommend 7–12% additional material for on-site grading, trimming and installation factors.



The mark of responsible forestry



Information is deemed reliable but subject to change. All photos for representation only. Additional information available at our website or call our wood design experts.