

ANTIQUE HEART PINE

You're holding a piece of **history** in your hands.

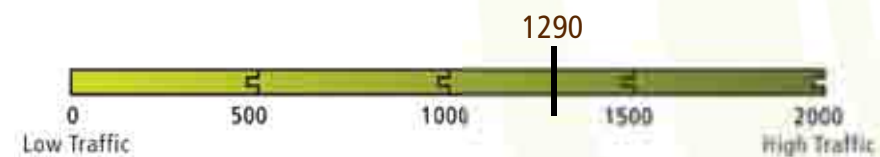
CHARACTER SELECT

Our Character Select Antique Heart Pine is the ideal choice if you want to create a room that is relaxed and informal. Heart Pine is much harder than the name might suggest and wears almost as well as red oak. The boards are a combination of vertical and flat sawn grain and show knots and a wide color variation, along with ferrous staining.

AVAILABLE IN
Solid

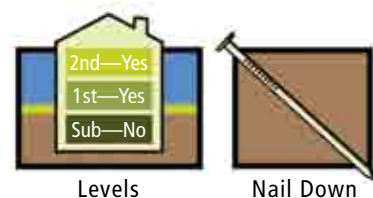
FINISH
Unfinished
Prefinished with aluminum oxide

HARDNESS



DIMENSIONS
Thickness: 3/4"
Widths available: 3-10"
Length: 2-12' Random

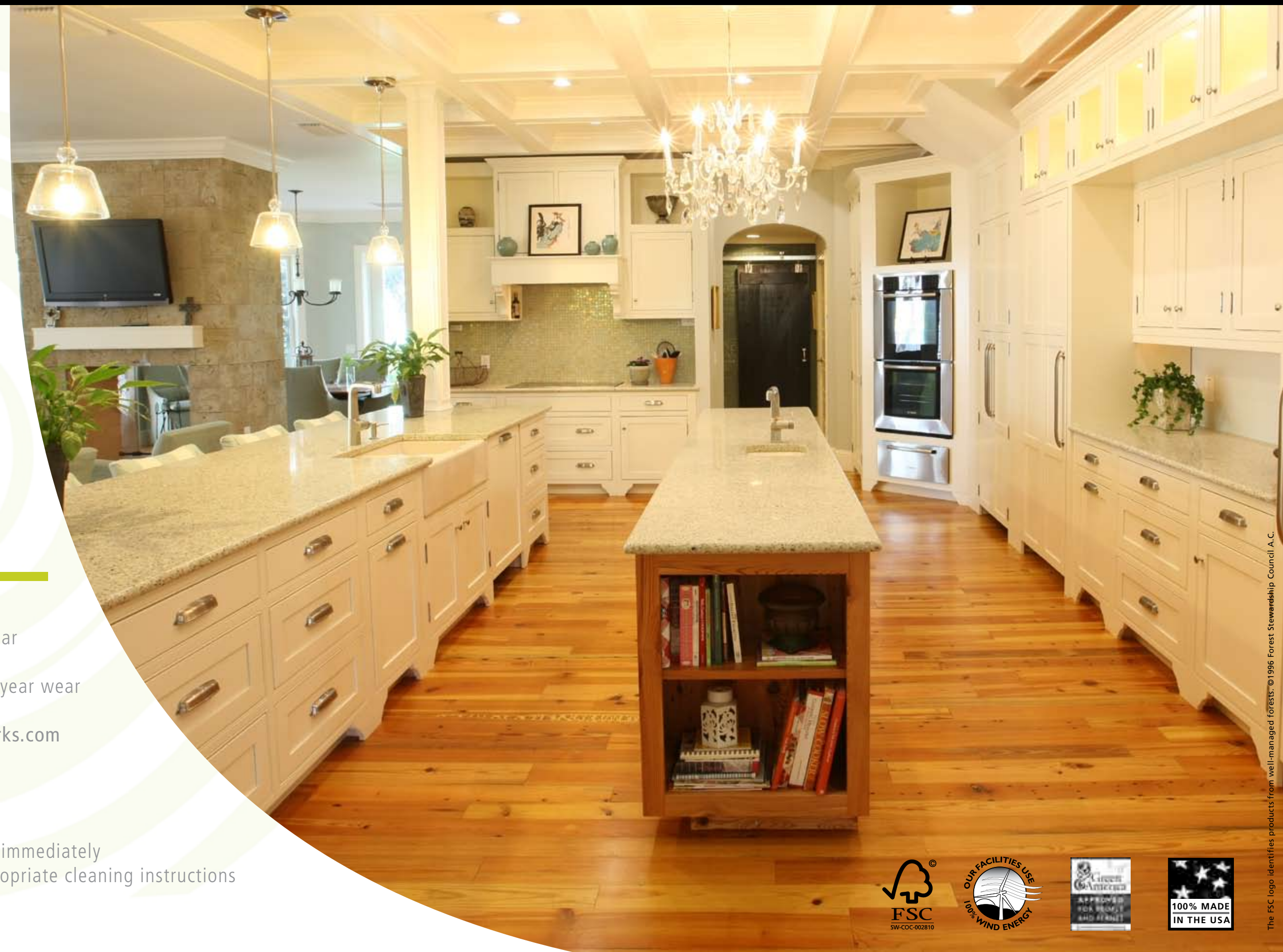
RECOMMENDED INSTALLATION



WARRANTY
Floor: Limited warranty, including 25 year structural guarantee.
Finish: Prefinished products include 20 year wear through guarantee.
For further details visit: pioneermillworks.com

CARE & MAINTENANCE

- Broom clean
- Spills of any kind should be cleaned immediately
- Consult finish manufacturer for appropriate cleaning instructions





ANTIQUE HEART PINE — CHARACTER SELECT

Presents a more casual appearance with some character marks present from woods previous life

DENSITY

50% dense grain (8 rings per inch)

HEARTWOOD

75% Heartwood

GRAIN

No restriction on mixture of flat sawn and vertical grain

COLOR

Unlimited color variation

KNOTS

Firm knots allowed, very occasional black knots. No limitations on frequency of firm knots. Size shall be maximum 2" diameter in boards less than 6" wide, 3" diameter in boards 6" and wider

TEXTURE

Re-sawing and milling removes all but very infrequent saw marks and previous wear patterns

HOLES

Nail holes generally limited to 1/4" diameter. Up to 15% boards can be naily.

DISCOLORATION

Unlimited ferrous staining usually found around fastener holes, blue stain may be present in sapwood

CHECKS

Non-structural checks occasionally allowed up to 1/8" wide. Sound pith allowed.

LENGTHS

2' to 12' is standard, 5' – 7' average

* Grading applies to flooring and boardstock, all material graded best face.