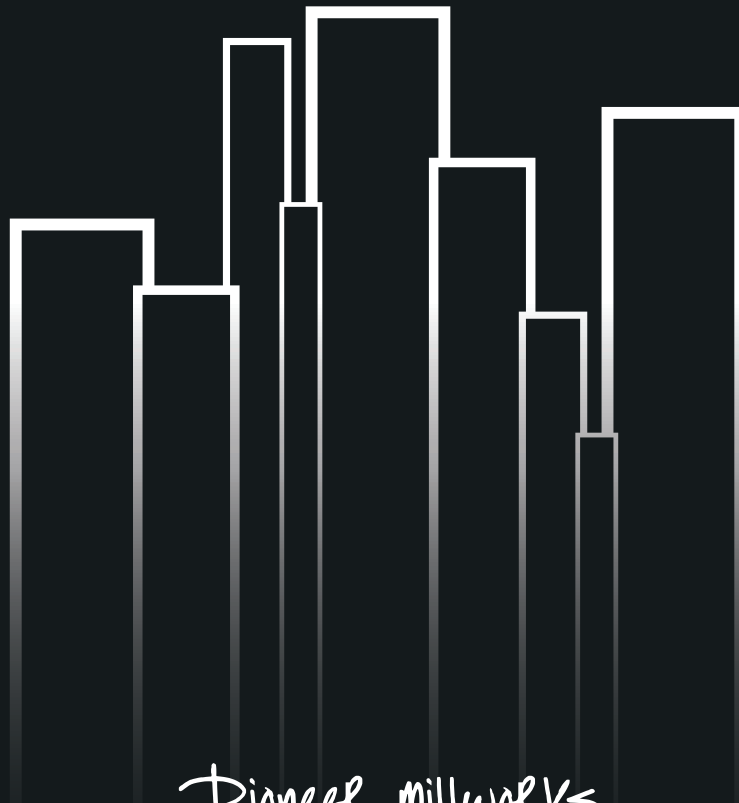


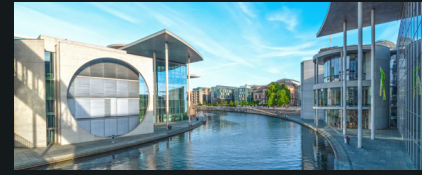
# Skyline™

MULTIDIMENSIONAL CLADDING



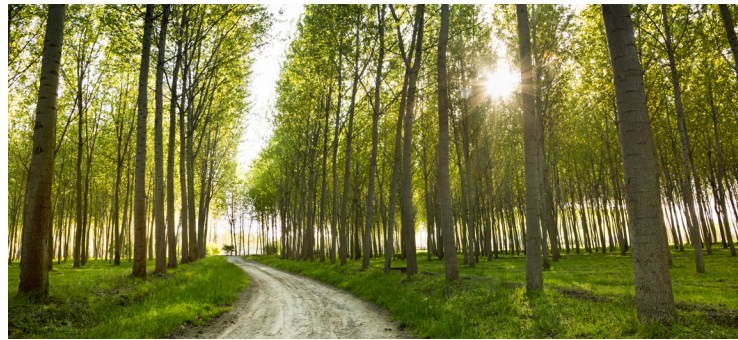


Skyline™ is a new large-scale commercial wall cladding product line from Pioneer Millworks that is completely customizable—offering designers, architects, and builders the ability to create unique dynamic accent walls by combining a mix of our different colors, lengths, widths, and milling heights, giving any space a singular look and feel.



## Inspiration

Skyline™ is inspired by dynamic urban landscapes from around the world. Customizable in large scale, Skyline™ offers a unique opportunity to design sophisticated dimensional landscapes with our proprietary color palate that evokes diverse cityscapes from around the world.



## Wood

For indoor applications, Skyline™ is available in sustainably harvested hardwood. For outdoor applications, Skyline™ is available in FSC® certified and cradle-to-cradle gold certified Accoya® - top choice for sustainability, rot resistance, and material health.

## Finish

Skyline™ comes prefinished in a natural no-VOC exterior Purematte Polywhey finish in a variety of custom colors and ready to install.

Oslo

Matera

Berlin

Sapporo

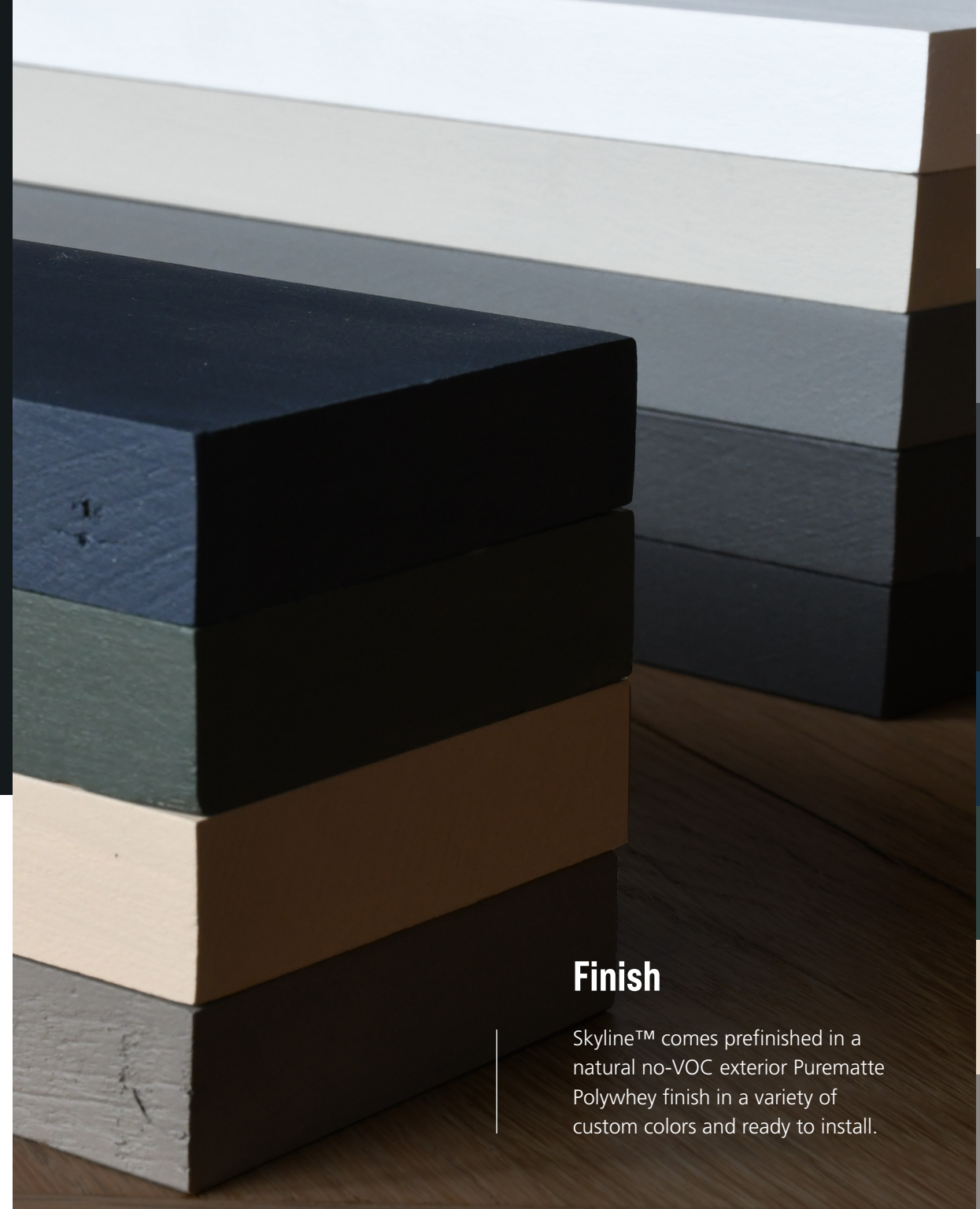
Gotham

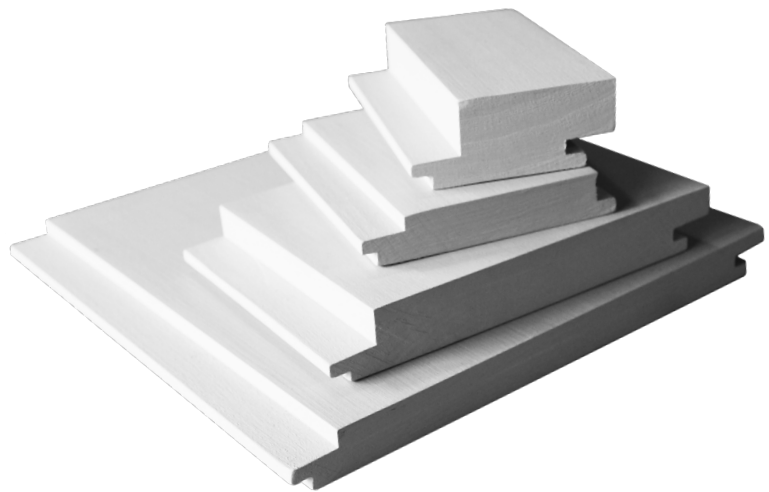
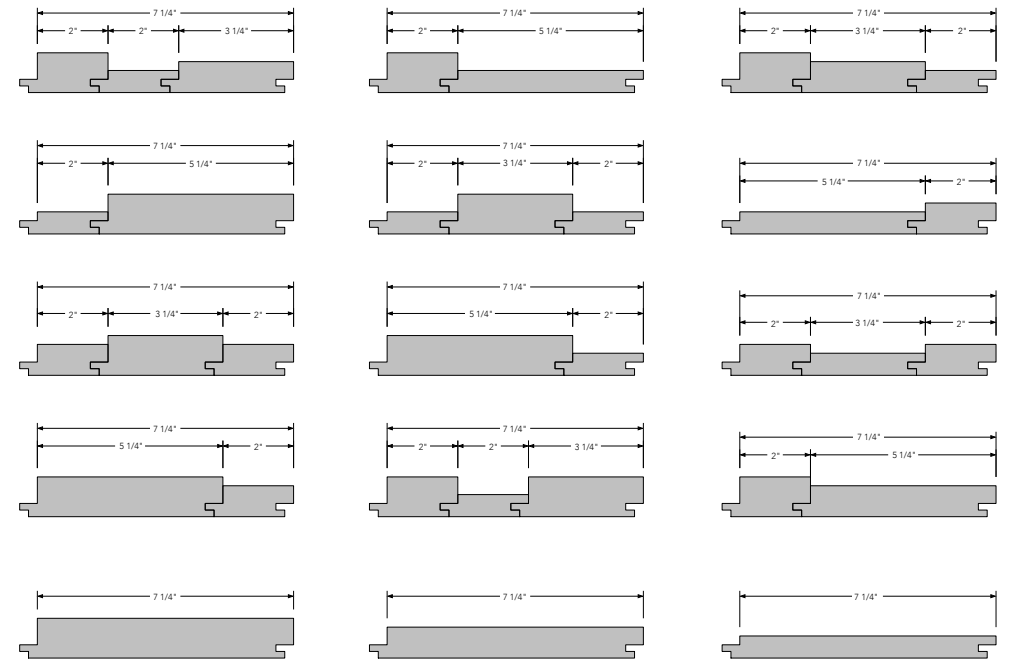
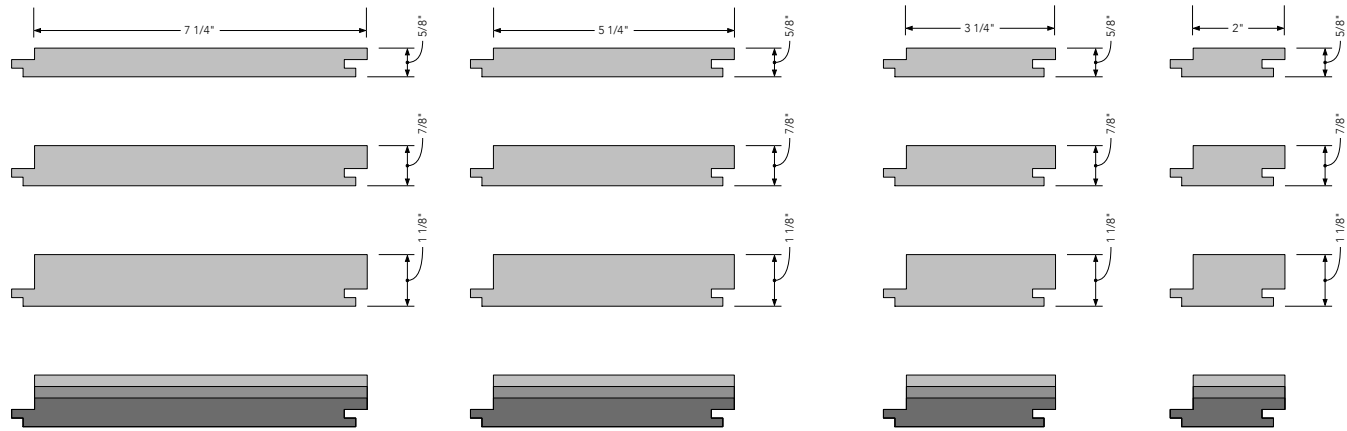
Auckland

Ketchikan

Zanzibar

Sao Paulo

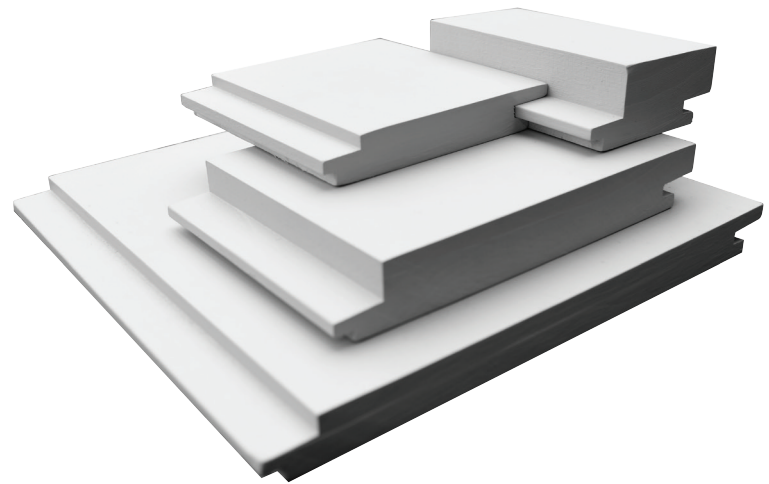




## Size

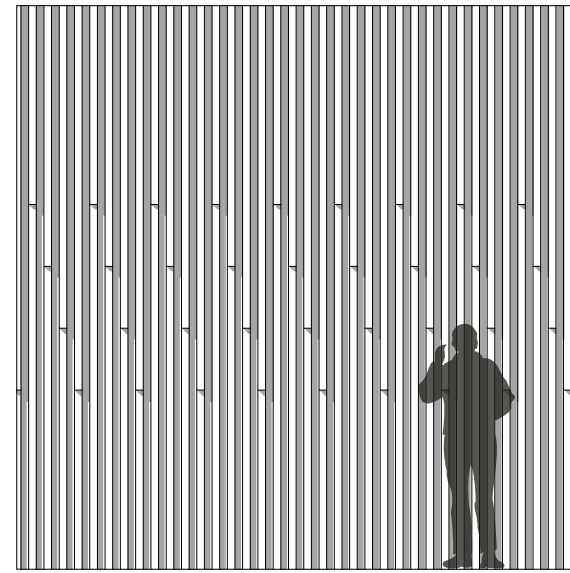
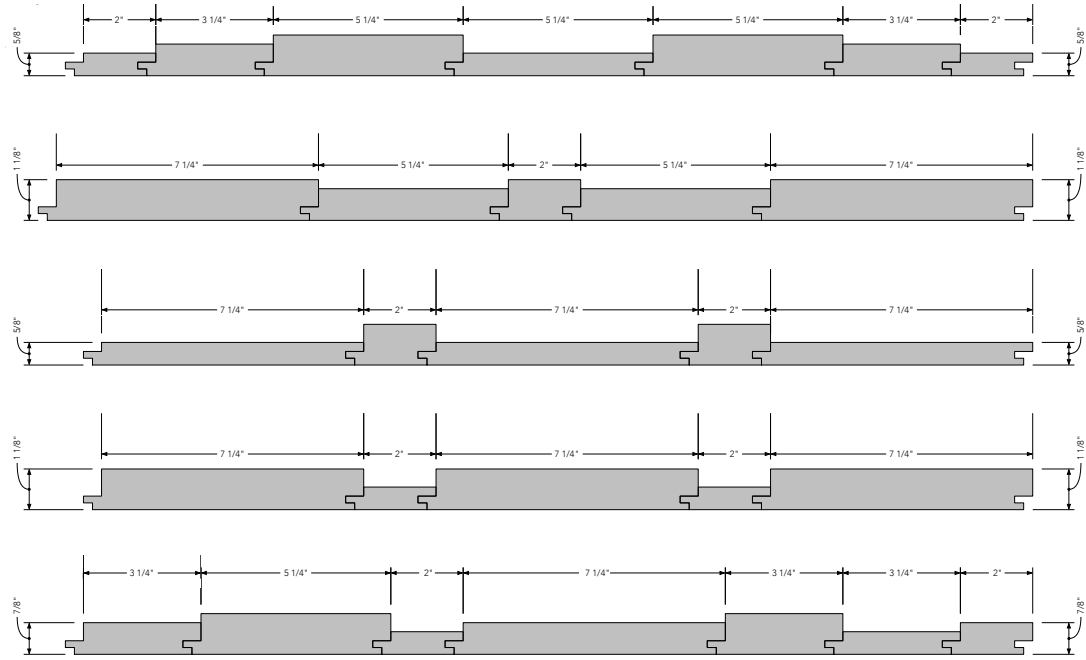
Skyline™ comes in a variety of different widths and milling heights that are universally interchangeable.

<b>Widths:</b>	<b>Heights:</b>
7 1/4"	1 1/8"
5 1/4"	7/8"
3 1/4"	5/8"
2"	



## Multidimensional

The dynamic patterns, textures, and multi-dimensional looks that can be created with Skyline™ are virtually endless, limited only by the designer's imagination.



**Staggering Thickness**



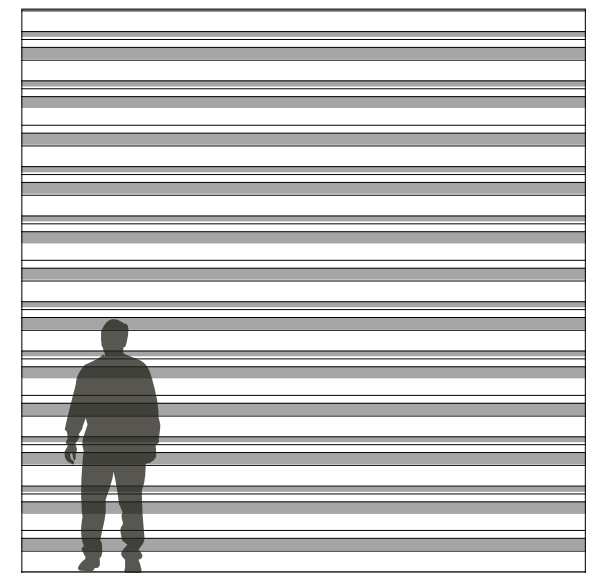
**Repeating Lines**

Zanzibar



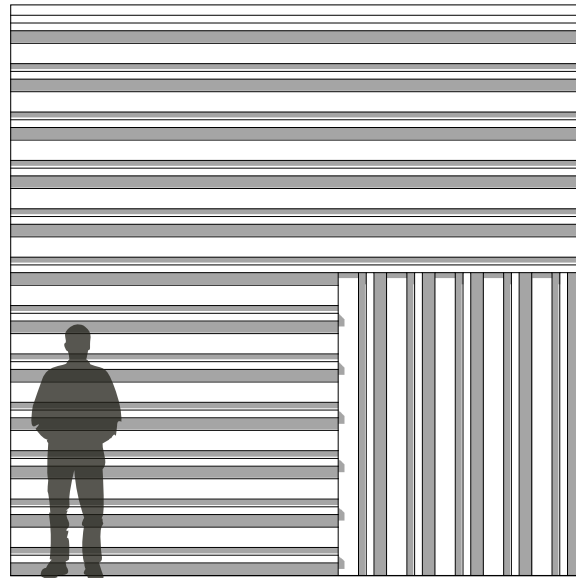
## Create Patterns

Skyline™ offers a number of unique interchangeable widths, colors, and milling heights that allow designers to create a wide variety of patterns.

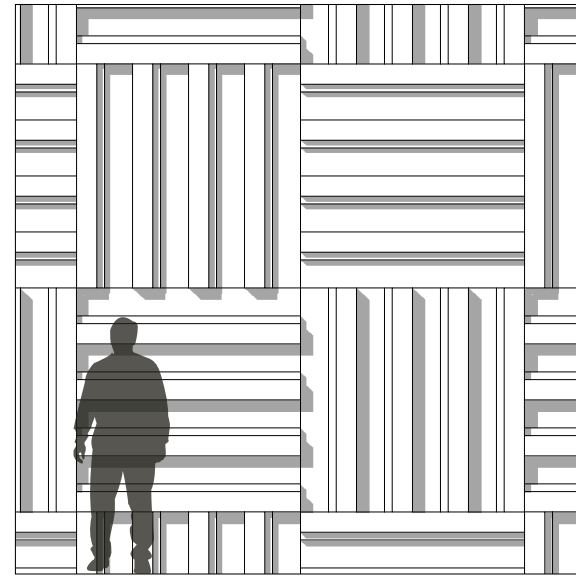




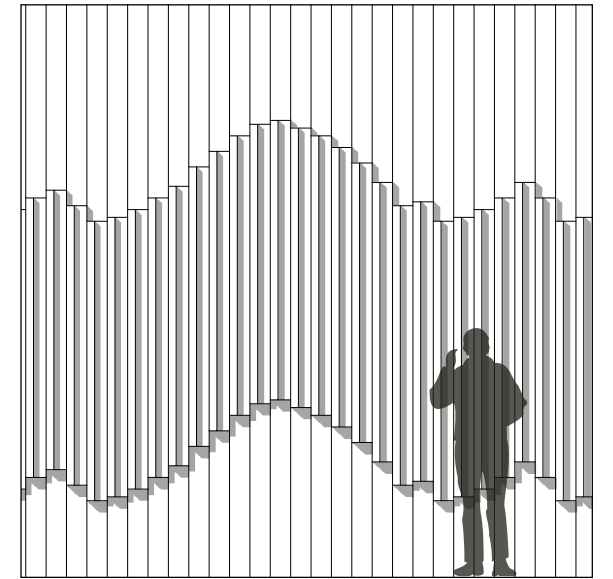
**Mixing Widths**



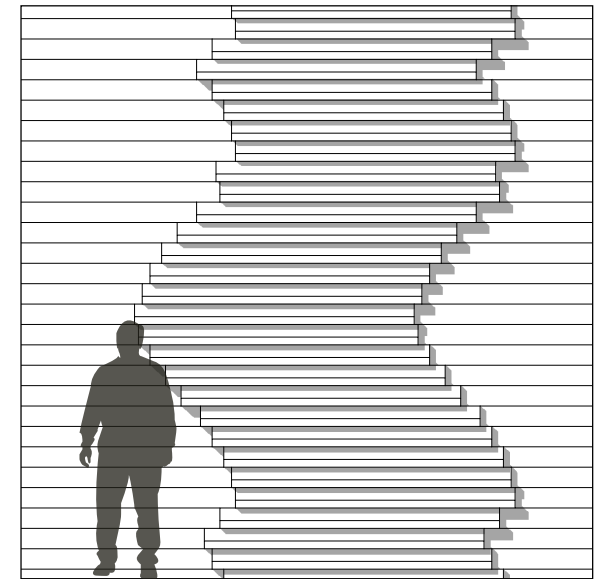
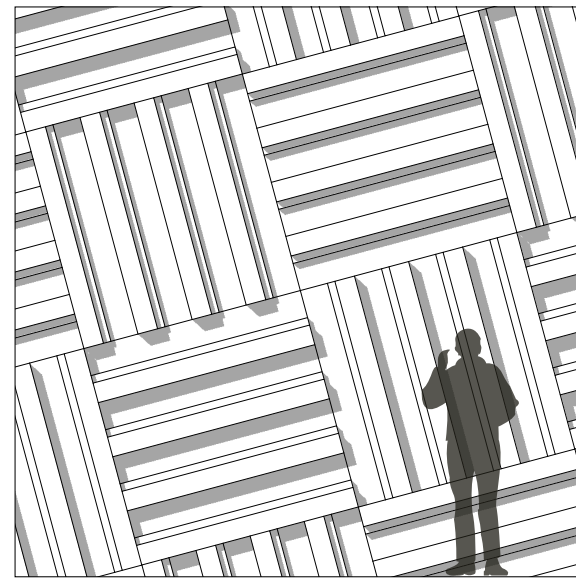
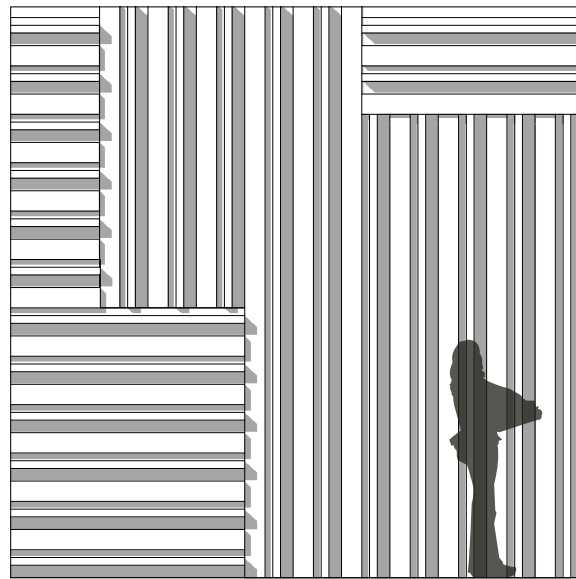
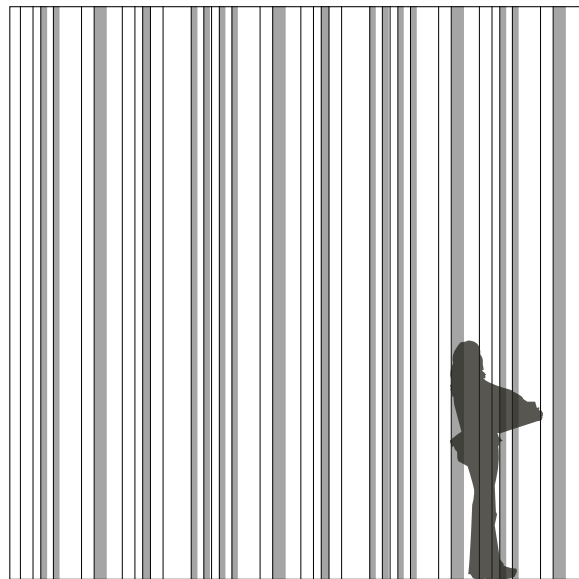
**Mixing Horizontal & Vertical**



**Horizontal & Angled**

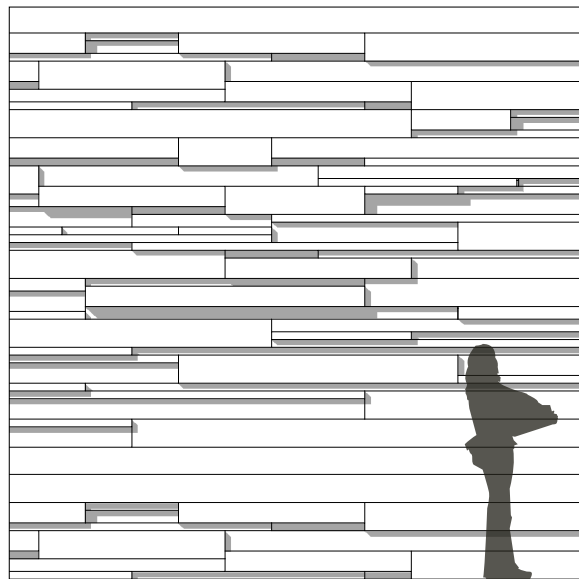


**Creating Movement**





Random

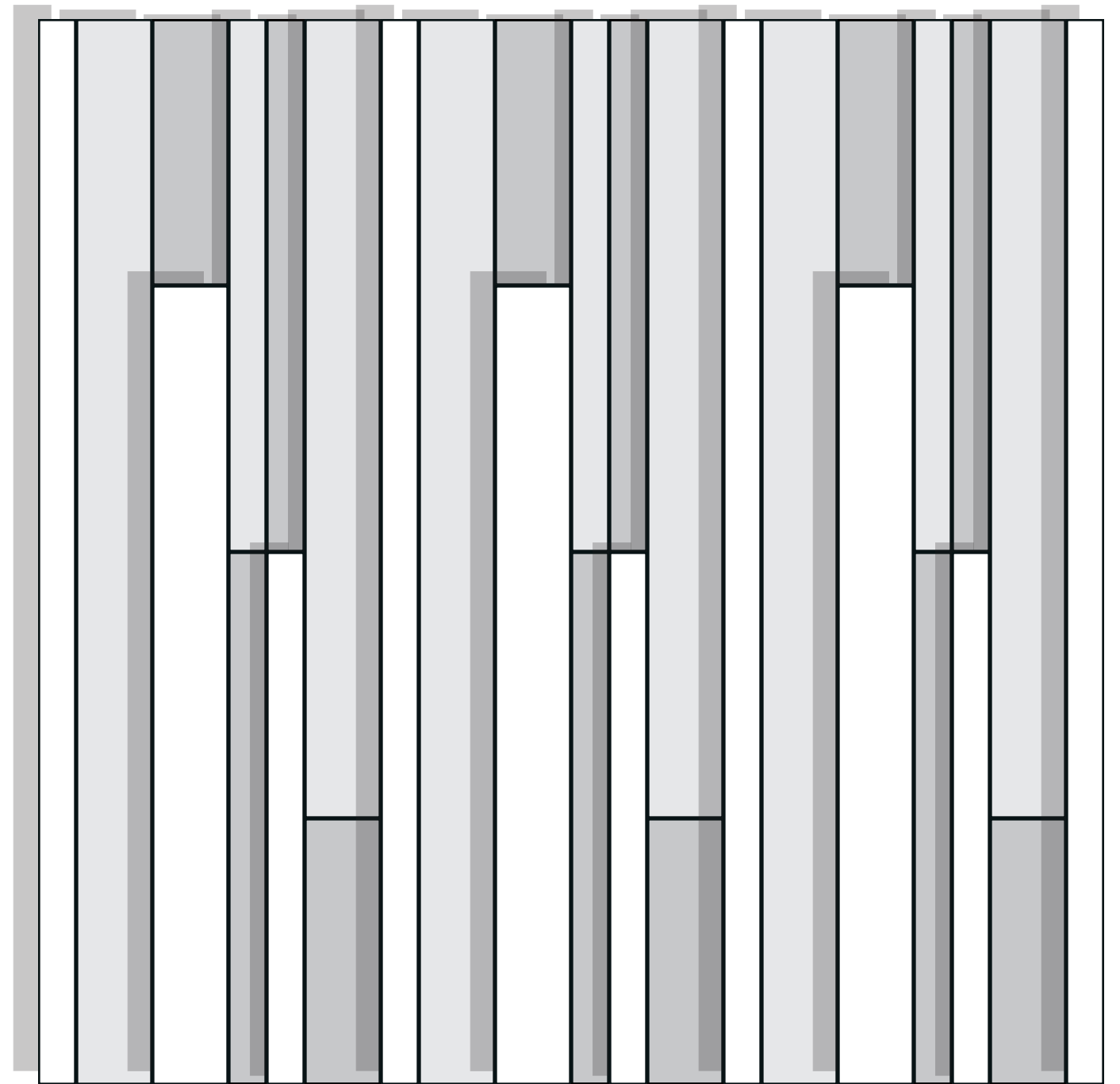


**DESIGN**  
→  
**Skyline™**  
MULTIDIMENSIONAL CLADDING



**PATTERNS**

Skyline™ is also a very versatile cladding system that can easily be assembled on site to form a random pattern thanks to its universal milling profile. Individual pieces will all fit together no matter what combination of widths or lengths are chosen.













Responsible wood flooring, paneling, siding, and decking made by people, for people who make.

Employee-Owned New York and Oregon Made | [pionermillworks.com](http://pionermillworks.com) | 800.951.9663