

7 POLART

polartdesigns.com
Created in collaboration with Mexican artist Montiel, the STREEaRT domechair is made by injecting polymer into a mold that surrounds a steel frame. Vibrant upholstery depicts graffiti with a Frida Kahlo-meets-David Bowie portrait, a juxtaposition of modern aesthetics with the chair's traditional form.

8 ORION HD

orionhd.com
Hexa tables feature hexagon-shaped Swarovski crystals invisibly bonded to the underside of a black glass table top to create twinkling visual effects. Set on a bronze, patinated steel base, standard dimensions are 20-by-42-by-60-in. Also available in custom sizes.

9 DEMAR LEATHER COMPANY

demarleather.com
Italian artisans use state-of-the-art technology to emboss the Verona Diamante aniline leather range with geometric, 3D pyramid shapes. This textile is suitable for different treatments including seating and wallcoverings.

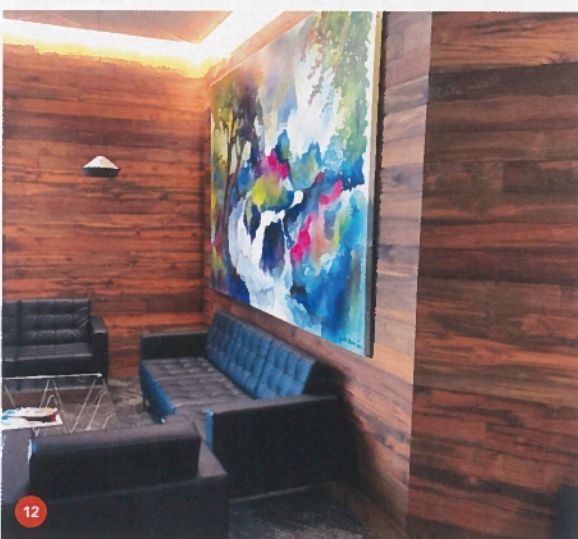
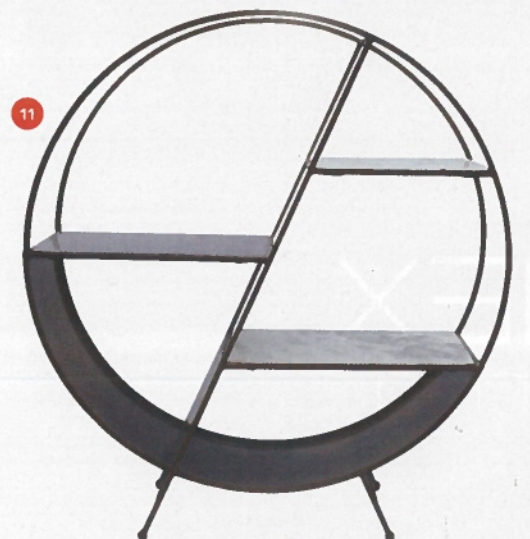


10 FIL DOUX TEXTILES

fildoux.com
The Coast to Coast collection features 12 patterns inspired by international coastal destinations, including the company's Chilean and Brazilian mills and its New York headquarters. Woven with the manufacturer's proprietary Experience Blend, the line showcases boldly-colored graphics digitally-printed on heavy-duty chenille. Suitable for high-traffic environments.

11 RENWIL

renwil.com
With its circular iron frame in an antique brass patina, the Pallas unit has three shelves crafted from natural granite and white marble. The Art Deco *étagère* measures 36-by-40-by-12-in. and has diagonal support for increased stability.



12 PIONEER MILLWORKS

pioneermillworks.com
Water, insect and mildew resistance make this ethically-harvested, fresh-sawn Indonesian teak suitable for wet environments. FSC-certified and LEED-eligible, it comes as engineered and solid timber in single or random widths up to 9-in., with Chevron, Finger-jointed, Shiplap and Versailles patterns. Reclaimed 18th and 19th century planks are available in Rugged Patina, Wire Brushed and Bright finishes.