

### CUT AND PASTE SPECIFICATION INTO APPROPRIATE CSI DIVISION

09 64 20 — Reclaimed Wood Flooring

06 42 00 — Wood Paneling

### MANUFACTURER

Pioneer Millworks  
1180 Commercial Dr  
Farmington, NY 14425

### MATERIALS

**Product:** American Gothic Hickory  
**Collection:** Reclaimed  
**Species:** Domestic Hickory  
**Texture:** Smooth Planed  
**Source:** Agricultural Deconstruction  
**Color:** Tones may range from cream to brown.

*Unlimited color variation is inherent to the product.*

**Finish:** Available in Naked and Pure  
**Hardness:** 1820

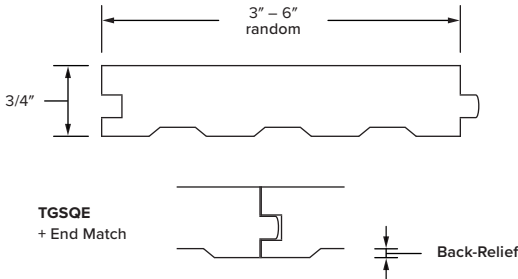
*(Janka Ball Test ASTM D1037-96A, Natural wood products have no minimum hardness since hardness is a characteristic of species and cannot be controlled)*

### DIMENSIONS & MILLING

**Solid** (Unfinished)

Thickness:	3/4"	Profile + End Match:	TGSQE (Tongue and Groove Square Edge)
Width:	3" – 6" random wider widths may be available upon request	Back-Relief:	Included
Length:	18" – 12' random		

**Solid** (Unfinished)



### ADDITIONAL INFORMATION

**Heartwood:** No Restriction

**Grain:** No Restriction

**Knots:** No limitations on sound knots.

*Surface defects from chipped or open knots may be present.*

**Texture:** Surface should generally be 95% clear of saw marks or patina.

**Voids:** In engineered prefinished product Voids up to 1" in diameter will be filled with a black composite.

*Insect marks, including pinholes, may also be present on the surface.*

**Discoloration:** Ferrous staining from previous fasteners may be present.

**Checks:** Structural checks not affecting the integrity of the plank, once installed, are allowed and more prevalent as the width of the material increases.

**Moisture Content:** Kiln dried 6–9% prior to milling.

### CERTIFICATIONS & LEED INFORMATION

**FSC® Claim:** FSC® Recycled 100% (SCS-COC-003998-D)

**MRc3:** Materials Reuse

*(materials used for this credit cannot be applied to MRc4 or MRc5)*

**MRc4:** Recycled Content, 100% Post-Consumer Recycled Content

*(materials used for this credit cannot be applied to MRc3 or MRc7)*

**MRc5:** Regional Materials (call for details)

### INSTALLATION RECOMMENDATIONS

**Overage:** Minimum 10% additional material

*for on-site grading, trimming and installation factors.*

**Climate:** As with any wood flooring product, the room temperature should be held at a consistent range between **60-80° F** with relative humidity between **30-60%**.

*Environmental conditions consistently outside of these parameters could result in product performance issues.*



**Unfinished**

SKU# 13111610010



**Naked**

SKU# 13111610111



**Pure**

SKU# 13111610211