



**CUT AND PASTE SPECIFICATION
INTO APPROPRIATE CSI DIVISION**

06 42 00 — Wood Paneling

07 46 23 — Wood Siding

MANUFACTURER

Pioneer Millworks
2655 NE Orchard Ave
McMinnville, OR 97128

MATERIALS

Product: Shou Sugi Ban Fir, Deep Char

Collection: Shou Sugi Ban

Species: Douglas Fir

Texture: Surface will have a deeply charred,
“crackled” texture.

Source: Sustainably Harvested Forests.

Color: Carbonized, deep black tones.

Grade: D Select Vertical Grain.

Finish: Burned and coated with an exterior sealer.
Back burned to promote stability.

Hardness: 620

*(Janka Ball Test ASTM D1037-96A, Natural wood products
have no minimum hardness since hardness is a
characteristic of species and cannot be controlled)*

ADDITIONAL INFORMATION

Heartwood: No Restriction

Grain: Vertical

Knots: Material to be primarily free of knots.

Texture: Surface will have a deeply charred,
“crackled” texture.

Voids: Occasional blown out knots up
to 1" diameter may be present.

Checks: Checks allowed so long as material
integrity is not adversely affected.

Moisture Content: Kiln dried 12–15% prior to milling.

CERTIFICATIONS & LEED INFORMATION

FSC® Claim: FSC® Mix (SCS-COC-003998-D)

MRc5: Regional Materials (call for details)

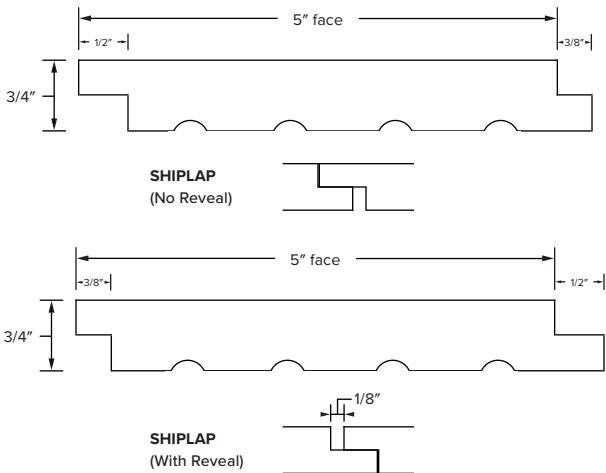
MRc7: Certified Wood

INSTALLATION RECOMMENDATIONS

Overage: Minimum 10% additional material
for on-site grading, trimming and installation factors.

Climate: As with any wood product, extreme
climate conditions including heat, cold,
humid or arid can cause movement and
performance issues with the material.

Solid (Prefinished)



DIMENSIONS & MILLING

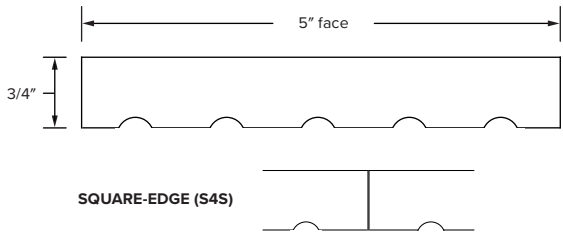
Solid (Prefinished)

Thickness: 3/4" Profile: SHIPLAP (No Reveal)
SHIPLAP (With Reveal)

Width: 5" face SQUARE-EDGE (S4S)

Length: 6' – 16' random
Called lengths available

Solid (Prefinished)





Fir Deep Char

SKU# 16421411712