

Shou Sugi Ban Larch

Traditionally Inspired American Made™. This 18th century technique of preserving wood with fire is refreshed for today's design. Aggressively burning the surface layer of our sustainably harvested Larch, we then wire-brush each plank multiple times to remove the soft char and expose the contrasting grain below. This heavily textured and visually dynamic surface is coated with an exterior grade finish in a selection of cool greys, warm browns, or a pop of color. Larch is a durable wood with attractive tones and interesting grain patterns. Our Shou Sugi Ban Larch Tiger's Eye is recommended for interior applications only due color instability resulting from the lack of pigment in the finish.

CUT AND PASTE SPECIFICATION INTO APPROPRIATE CSI DIVISION	
06 42 00 — Wood Paneling	
07 46 23 — Wood Siding	
MANUFACTURER	
Pioneer Millworks 2655 NE Orchard Ave McMinnville, OR 97128	
MATERIALS	
Product:	Shou Sugi Ban Larch
Collection:	Shou Sugi Ban
Species:	Western Larch
Texture:	Wire-Brushed
Source:	PEFC-Certified Sources
Color:	Available in 9 standard colors. <i>Latewood growth rings will range from dark brown to black.</i>
Grade:	Sound Tight Knots (STK)
Finish:	Burned and coated with an exterior sealer. Back burned to promote stability. <i>* Shown in Carbon</i>
Hardness:	830 <i>(Janka Ball Test ASTM D143, Natural wood products have no minimum hardness since hardness is a characteristic of species and cannot be controlled)</i>
DIMENSIONS & MILLING	
Profiles:	SHIPLAP (No Reveal) SHIPLAP (With Reveal) SQUARE-EDGE (S4S)
Thickness:	5/8"
Width:	5" face
Length:	8'– 16' random <i>(At least 20% of each order will be the longest length in the range)</i> <i>Called lengths available</i>

ADDITIONAL INFORMATION

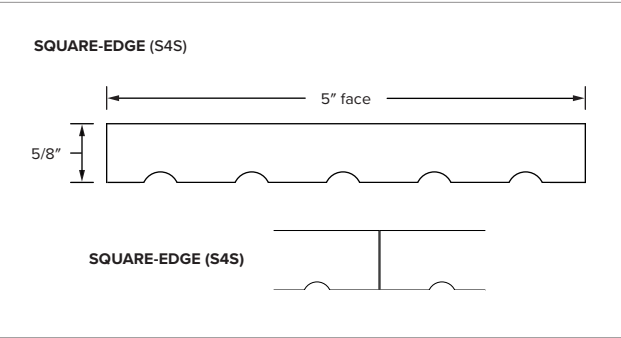
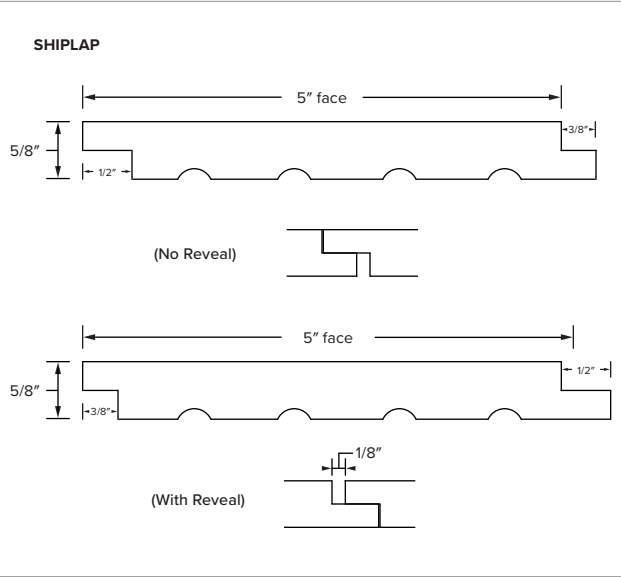
Heartwood:	No Restriction
Grain:	No Restriction
Knots:	No limitations on sound knots. <i>Surface defects from chipped or open knots may be present.</i>
Voids:	Occasional blown out knots up to 1" diameter may be present.
Checks:	Checks allowed so long as material integrity is not adversely affected.
Moisture Content:	Kiln dried 12–15% prior to milling.

CERTIFICATIONS & LEED INFORMATION

FSC® Claim: N/A

INSTALLATION RECOMMENDATIONS

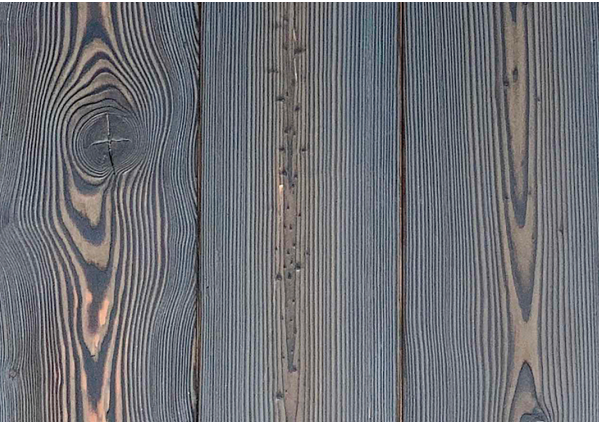
Overage:	Minimum 15% additional material <i>For on-site grading, trimming and installation factors.</i>
Climate:	As with any wood product, extreme climate conditions including heat, cold, humid or arid can cause movement and performance issues with the material.





Charcoal

SKU# 16401714212



Cinder

SKU# 16401712012



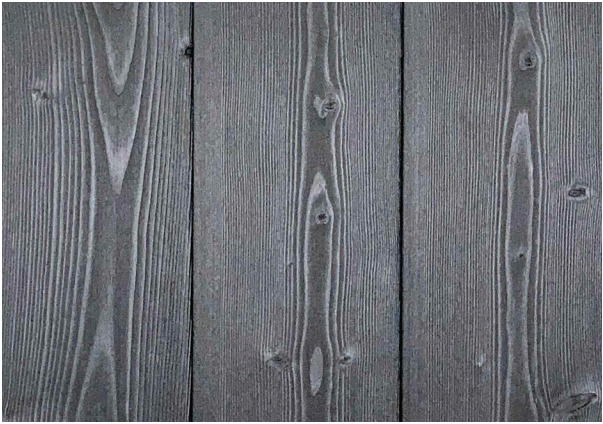
Smoke

SKU# 16401710412



White

SKU# 16401712112



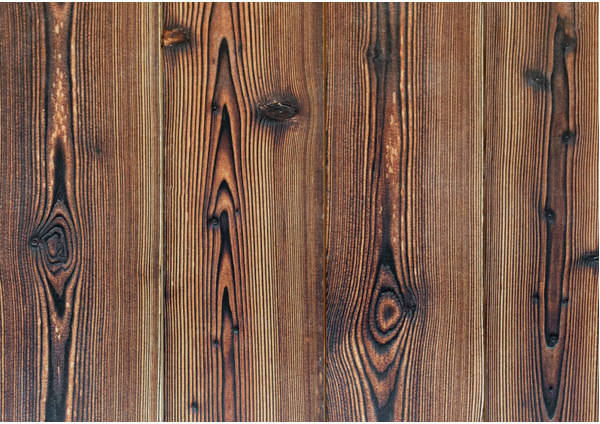
Carbon

SKU# 16401711812



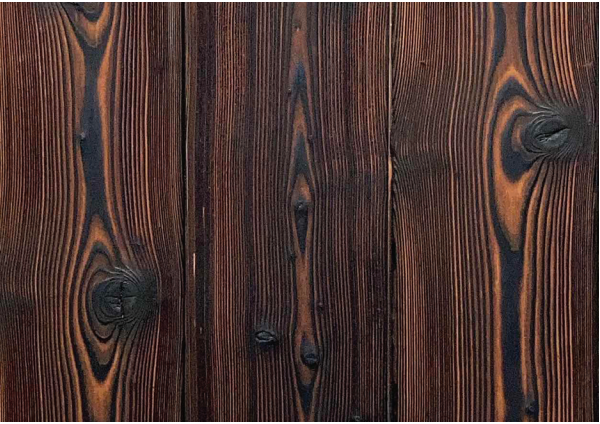
Scorched

SKU# 16401714612



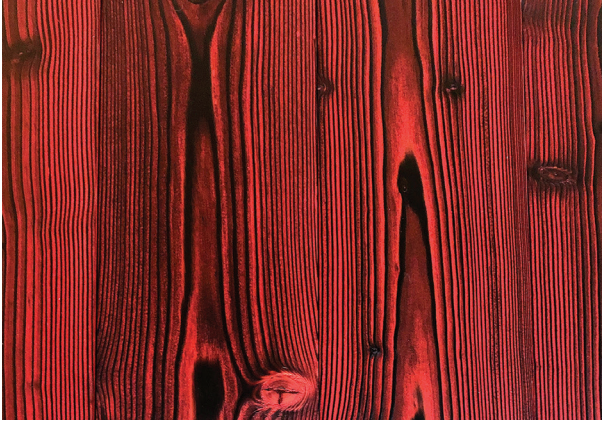
Tiger's Eye (Interior Use Only)

SKU# 16401714112



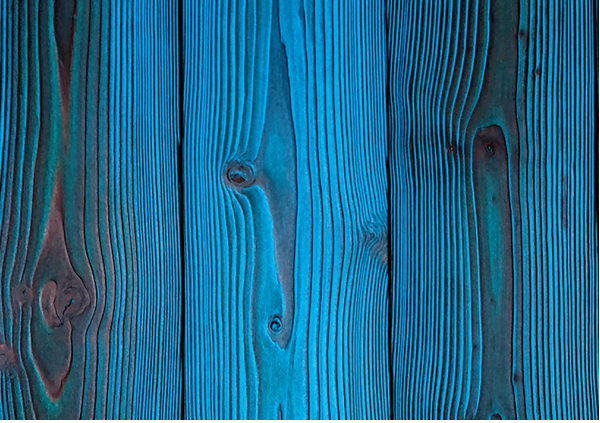
Toasted (Interior Use Only)

SKU# 16401714112



Ember

SKU# 16401712212



Cobalt

SKU# 16401712312