



Larch Siding & Shiplap

Pioneer Millworks Larch Siding and Shiplap is PEFC sourced Larch. The signature swirling grain and small tight knots of larch brings a natural finish to vertical applications. The rot resistance of this underutilized species rivals that of Douglas fir, and it is locally grown in the Pacific Northwest which makes it a great option for exterior or interior uses. Pair it with one of our color options which show off the wood grain patterns through hue and tone; it has been brushed which enhances color saturation & adhesion.

CUT AND PASTE SPECIFICATION INTO APPROPRIATE CSI DIVISION	
06 42 00 — Wood Paneling	
07 46 23 — Wood Siding	
MANUFACTURER	
Pioneer Millworks 2655 NE Orchard Ave McMinnville, OR 97128	
MATERIALS	
Product:	Larch Siding & Shiplap
Collection:	Siding & Shiplap
Species:	Western Larch (Larix occidentalis)
Texture:	Wire-Brushed
Source:	Sustainably Harvested Forests
Color:	Available prefinished standard and custom colors available. Unfinished wood tone ranges from cream to light brown. <i>Unlimited color variation is inherent to the product.</i>
Grade:	Sound Tight Knots (STK)
Finish:	Unfinished or prefinished with a exterior sealer as specified (2 coats face, one coat back). <i>* Shown Unfinished</i>
Hardness:	830 <i>(Janka Ball Test ASTM D143, Natural wood products have no minimum hardness since hardness is a characteristic of species and cannot be controlled)</i>

DIMENSIONS & MILLING

Profiles:	SHIPLAP (No Reveal) SHIPLAP (With Reveal) SQUARE-EDGE (S4S) TGBVE (Tongue and Groove Bevel Edge)
Thickness:	5/8"
Width:	5" face
Length:	8'– 16' random <i>(At least 20% of each order will be the longest length in the range)</i> <i>Called lengths available</i>

ADDITIONAL INFORMATION	
Heartwood:	No Restriction
Grain:	No Restriction
Knots:	No limitations on sound knots. <i>Surface defects from chipped or open knots may be present.</i>
Voids:	Occasional blown out knots up to 1" diameter may be present.
Checks:	Checks allowed so long as material integrity is not adversely affected.
Moisture Content:	Kiln dried 12–15% prior to milling.

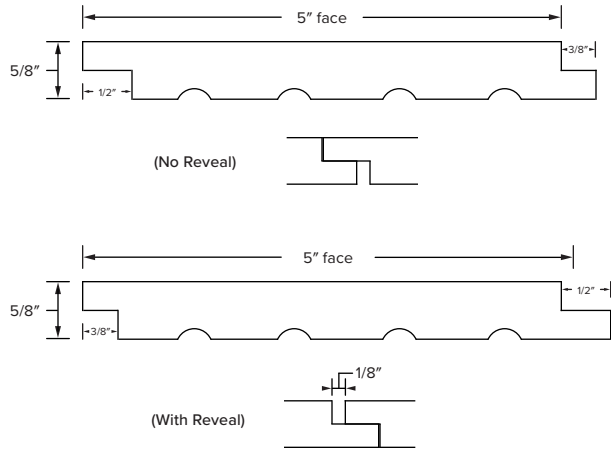
CERTIFICATIONS & LEED INFORMATION

FSC® Claim: N/A

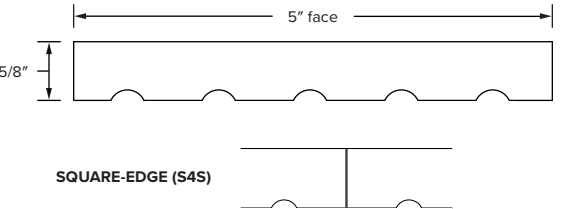
INSTALLATION RECOMMENDATIONS

Overage:	Minimum 15% additional material <i>For on-site grading, trimming and installation factors.</i>
Climate:	As with any wood product, extreme climate conditions including heat, cold, humid or arid can cause movement and performance issues with the material.

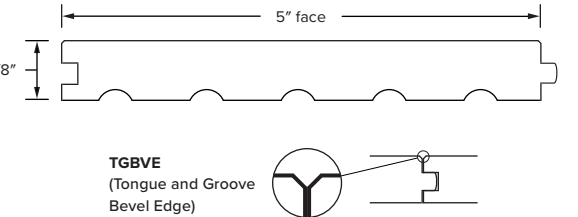
SHIPLAP



SQUARE-EDGE (S4S)



TGBVE (Tongue and Groove Bevel Edge)





Cloud SKU# 15401712412



Nickel SKU# 15401712612



Clay SKU# 15401716312



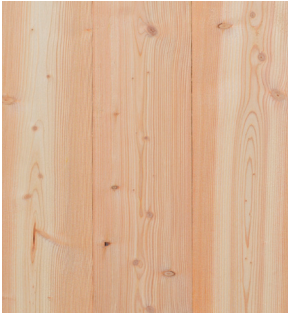
Sand SKU# 15401716312



Lowcountry Blue SKU# 15401718812



Pearl SKU# 15401718712



Clear SKU# 15401711412



Salt Flats SKU# 15401714312



Pebble SKU# 15401712912



Fawn SKU# 15401716212



Camel SKU# 15401714512



Poppy SKU# 15401719012



Fossil SKU# 15401713412



Primed SKU# 15401713712



Scandi SKU# 15401712512



Storm SKU# 15401712812



Grove SKU# 15401716112



Tawny SKU# 15401713112



Mountain Laurel SKU# 15401718912



Pinecone SKU# 15401716412



Harbor SKU# 15401714412



Black SKU# 15401712712



Hazy SKU# 15401713312



Cocoa SKU# 15401713212



Twilight Blue SKU# 15401719112